

# MOTOTRBO™ RADIO ACCESSORIES PERFORMANCE THAT LIVES UP TO ITS PROMISE



# MOTOTRBO™ MAKE YOUR BUSINESS MORE EFFICIENT AND BETTER CONNECTED

TRANSFORM YOUR WORKPLACE WITH DIGITAL TECHNOLOGY.

Your people are on the job, in the field, on the factory floor, moving across campus or throughout the city. Whether they're moving freight or providing security, repairing roads or restoring power lines, you need to keep them all connected, everywhere they go.

How do you equip them with technology that is easy to use? Improve their performance and increase productivity? The answer is as simple, seamless and scalable as MOTOTRBO.

Our robust, future-ready, standards-based solution is so flexible and versatile, it can be customized to fit your unique business, coverage and application needs. MOTOTRBO is the complete business-essential solution with portable radios, mobile radios, repeaters, accessories, data applications and services.



# THE DIGITAL DIFFERENCE



MOTOTRBO offers a robust, standards-based solution that can be tailored to meet your unique coverage and feature needs. This versatile portfolio provides a complete system of portable radios, mobile radios, repeaters, accessories, data applications, and services – a comprehensive communication solution for your business.

MOTOTRBO offers a multitude of features and benefits. TDMA digital technology provides twice the calling capacity (as compared to analog or FDMA radios) for the price of one frequency license. Integrated voice and data capabilities support integrated applications including MOTOTRBO Text Messaging Services and an integrated GPS module is included for use with your third-party location tracking applications. Also, Motorola's Application Developer Program accommodates custom data applications so that you can adapt radios to support your specific business tasks.

And digital voice processing plus enhanced call signaling can help to assure faster and more reliable calls. Other features such as enhanced battery life, IP57 immersibility for portables, and the ability to operate in both analog and digital modes make it easy and affordable to adapt MOTOTRBO for the unique needs of your operation, and migrate to a digital two-way radio platform at your own pace.

Whether you're working in harsh conditions, noisy environments, long shifts or looking for discreet communication, MOTOTRBO accessories and batteries stand up to the task and stand out in the field. We designed and developed a complete portfolio of solutions with this exclusive, leading-edge technology. Our accessories and batteries are specially designed to perform optimally with our portable and mobile radios.

## **MOTOTRBO PORTABLES**

XPR 6550/6580 Display Portable Radios

XPR 6350/6380 Non-Display Portable Radios

XPR 6580 I.S. CSA Display Portable Radio (sold in Canada only)

## **MOTOTRBO MOBILES**

XPR 4550/4580 Display Mobile Radios

XPR 4350/4380 Numeric Display Mobile Radios

## **MOTOTRBO REPEATERS**

XPR 8300/8380/8400, MTR 3000 Repeater



## HEAR CLEARER. TALK LONGER. WORK SMARTER WITH IMPRES™ TECHNOLOGY.

We created our patented IMPRES technology as an integral part of our two-way radio audio accessories, batteries and chargers. Users who rely on IMPRES Smart Audio and Smart Energy systems call them innovative and indispensable. We call IMPRES the intelligent way to communicate – offering enhanced performance and exceptional capabilities between your radio and accessories, your battery and charger, your workforce and workplace.

### IMPRES SMART AUDIO ACCESSORIES

Our IMPRES Smart Audio is a Motorola-exclusive solution that provides exactly what businesses and agencies seek: two-way audio quality that's loud, clear and intelligible in digital and analog modes.

#### EXCEPTIONALLY CLEAR AUDIO

IMPRES audio accessories communicate with the radio to help suppress ambient noise, improve voice intelligibility and amplify loudness – even in noisy situations and difficult weather. So if you're a security officer with an IMPRES remote speaker microphone clipped to a lapel or a hospitality manager wearing an earpiece, you can carry on a conversation with clarity, simplicity and certainty.

#### STOP ADJUSTING VOLUME

Are your employees on surveillance and discreet conversation is expected? Trying to talk above the roar of the crowd in a stadium? When they need to speak quietly or at normal volume but not directly into the microphone, enhanced Audio Gain Capability (AGC) can make all the difference. This IMPRES feature detects changes in voice levels and automatically increases or decreases microphone gain so the receive end doesn't have to adjust volume levels repeatedly.

#### CUSTOMIZE TO YOUR WORKSTYLE

IMPRES accessory buttons can be programmed with "shortcuts" in addition to the programmable buttons available on your radio. You can use your accessory to access additional important features, such as private calls, with just a touch.

### IMPRES SMART ENERGY SYSTEM

For the line worker on a long shift or the public works officer laboring overtime to restore power, the job stops when their radio stops operating. Our innovative IMPRES battery charging and reconditioning system streamlines and automates battery maintenance. It draws on our exclusive technology to communicate between your battery and charger to help lengthen battery life and extend talk time.

#### AUTOMATES BATTERY MAINTENANCE

You want to be sure you get the most out of every battery by maximizing its life. With IMPRES you can, because it automates battery maintenance. IMPRES integrates

reconditioning capability into the charger along with the means to evaluate battery usage and determine the best time to recondition it. By automating maintenance, IMPRES optimizes your battery's life.

#### ELIMINATES OVERCHARGING

IMPRES batteries can be left in their IMPRES chargers for extended periods without heat damage from the charger. If radios are accidentally left in the charger – overnight, over a weekend or longer – there's no worry about shortening your battery's life. Because the IMPRES charger automatically monitors battery capacity batteries are safely charged to the right capacity and always ready to go.

#### BETTER DATA FOR BETTER DECISIONS

IMPRES batteries store critical usage information so you don't have to. Each two-line IMPRES charger display presents key data at a glance, so you can make informed decisions about battery replacement. Data includes key information such as: actual battery capacity, time remaining to complete charging, and each battery's unique serial number. If you're operating a large fleet of batteries, IMPRES battery data reader is a valuable diagnostic tool to evaluate individual IMPRES batteries. IMPRES Battery Fleet Management collects and consolidates that data automatically, so you can quickly and easily identify when batteries need to be replaced.

#### EXTENDED WARRANTY

When you use MOTOTRBO™ IMPRES batteries exclusively with IMPRES chargers, you can count on an 18-month capacity warranty coverage – six months longer than Motorola standard batteries.

#### TESTED TOUGH AND PROVEN TOUGH

IMPRES or any other Motorola batteries are Proven Tough. Time after time, in lab test after test – for Drop, Vibration and ESD (Electrostatic Discharge) – they withstand shocks, knocks, drops and shakes and outperform the leading brands. If your radio gets banged on a ride, rattled by heavy equipment or shocked by static electricity, you can depend on IMPRES batteries to stay true and stand tough.

# SPEAKER MICROPHONES

## WINDPORTING REMOTE SPEAKER MICROPHONES

The windporting feature dramatically lessens background noise from high winds and other severe weather conditions. The same technology helps prevent water from clogging the microphone port and distorting transmit audio, ensuring a user's confidence of clear communication.



**PMMN4024<sup>1</sup>**  
Remote Speaker Microphone with 3.5mm Audio Jack (IP54)



**PMMN4025<sup>1</sup>**  
IMPRES Remote Speaker Microphone with 3.5mm Audio Jack and Emergency Button (IP54)



**PMMN4040<sup>1</sup>**  
Remote Speaker Microphone, Submersible (IP57)



**PMMN4046<sup>1</sup>**  
IMPRES Remote Speaker Microphone with Volume Control, Emergency and Programmable Button, Submersible (IP57)



**PMMN4067<sup>2</sup>**  
IMPRES Remote Speaker Microphone (CSA and IP64)

## NOISE-CANCELLING REMOTE SPEAKER MICROPHONE

This remote speaker microphone features a noise cancelling directional microphone which helps eliminate ambient noise and is beneficial in high noise environments. It also has a large housing for users operating with gloves or in rugged environments.



**PMMN4050<sup>1</sup>**  
IMPRES Remote Speaker Microphone with 3.5mm Audio Jack (IP54)

## IMPRES PUBLIC SAFETY MICROPHONES (PSM)

All PSMs include an emergency button and volume control. The PSM Antenna is sold separately and are listed in the antenna section of this catalog. PSMs are not compatible with the XPR 6380 and XPR 6580.

**PMMN4041<sup>1</sup>**  
IMPRES Public Safety Microphone (30 inch cable) with 3.5mm Audio Jack  
**PMMN4042<sup>1</sup>**  
IMPRES Public Safety Microphone (24 inch cable) with 3.5mm Audio Jack  
**PMMN4043<sup>1</sup>**  
IMPRES Public Safety Microphone (18 inch cable) with 3.5mm Audio Jack



**PMMN4047<sup>1</sup>**  
IMPRES Public Safety Microphone (30 inch cable), Submersible (IP57)  
**PMMN4048<sup>1</sup>**  
IMPRES Public Safety Microphone (24 inch cable), Submersible (IP57)  
**PMMN4049<sup>1</sup>**  
IMPRES Public Safety Microphone (18 inch cable), Submersible (IP57)



## RSM AND PSM ACCESSORIES

These accessories allow users to receive audio discreetly. Any of the above microphones that have a 3.5mm audio jack are compatible with the following earpieces:



**AARLN4885<sup>1</sup>**  
Receive-Only Covered Earbud with Coiled Cord



**RLN4941<sup>1</sup>**  
Receive-Only Earpiece with Translucent Tube and Rubber Eartip



**WADN4190**  
Receive-Only Flexible Earpiece



**PMLN4620<sup>1</sup>**  
Receive-Only D-Shell Earpiece

<sup>1</sup> Intrinsically Safe: Motorola approved accessories are a critical part of the specific radio and accessory system certified by a recognized testing organization as intrinsically safe. Non-Motorola approved accessories are not certified as part of the overall Motorola MOTOTRBO System. Use of non-Motorola approved accessories could result in equipment that is unapproved or unsafe in a hazardous environment.

<sup>2</sup> PMMN4067 when connected with a XPR 6580 I.S. radio model and properly equipped with the battery NNTN7789 is certified for permitted use for Ex ib IIC T4, Class II, Groups E, F, G and Class III, and DIP A21 TA 110° C. PMMN4067 is sold in Canada only.

# SURVEILLANCE AUDIO

## RECEIVE-ONLY SURVEILLANCE KITS

Simple, cost-effective solution when discreet communications is needed. Privately receive messages with the earpiece.



**RLN5878<sup>1</sup>**  
Receive-Only Earpiece, black  
**RLN5879<sup>1</sup>**  
Receive-Only Earpiece, beige

## IMPRES 2-WIRE AND 3-WIRE SURVEILLANCE KITS

Allows you to both transmit and receive discreet communications. All kits include one programmable-button for quick and easy access to critical radio features.

2-Wire kits include one wire for receiving and one wire for the microphone.  
3-Wire kits include one wire for receiving, one wire for the microphone and one wire for the push-to-talk.



**RLN5880<sup>1</sup>**  
IMPRES 2-Wire Surveillance Kit, black  
**RLN5881<sup>1</sup>**  
IMPRES 2-Wire Surveillance Kit, beige



**RLN5882<sup>1</sup>**  
IMPRES 2-Wire Surveillance Kit with Translucent Tube, black  
**RLN5883<sup>1</sup>**  
IMPRES 2-Wire Surveillance Kit with Translucent Tube, beige



**PMLN5097<sup>1</sup>**  
IMPRES 3-Wire Surveillance Kit, black  
**PMLN5106<sup>1</sup>**  
IMPRES 3-Wire Surveillance Kit, beige



**PMLN5111<sup>1</sup>**  
IMPRES 3-Wire Surveillance Kit with Translucent Tube, black  
**PMLN5112<sup>1</sup>**  
IMPRES 3-Wire Surveillance Kit with Translucent Tube, beige

## NOISE KITS

Provide extra comfort and noise protection for users wearing surveillance accessories. Lightweight, translucent tube attaches to the surveillance accessory to provide flexibility and comfort, while clothing clip prevents accessory from being pulled from the ear. For optimal performance, extra loud earphones are recommended for noise kits.



**RLN5886**  
Low Noise Kit, includes 1 clear rubber eartip. For low-noise environments (does not provide hearing protection)



**RLN5887**  
Extreme Noise Kit, includes 2 foam earplugs. For high-noise environments (Noise Reduction = 24dB)

## REPLACEMENT ACCESSORIES



**5080384F72**  
Replacement Foam Plugs for RLN5887  
Noise reduction = 24dB. Pack of 50.

## CLEAR COMFORTABLE EARPIECES

The Clear Comfortable Earpiece forms to the inside of the ear and is perfect for low noise environments. It's made of easy-to-clean, chemically-inert, hypo-allergenic material. Compatible with all Motorola Noise and Surveillance Kits.



**RLN6282**  
Replacement Standard Clear Rubber Eartips. Pack of 50.

- RLN4760**  
Small Custom Earpiece - Right Ear
- RLN4761**  
Medium Custom Earpiece - Right Ear
- RLN4762**  
Large Custom Earpiece - Right Ear
- RLN4763**  
Small Custom Earpiece - Left Ear
- RLN4764**  
Medium Custom Earpiece - Left Ear
- RLN4765**  
Large Custom Earpiece - Left Ear



## IMPRES TEMPLE TRANSDUCER

This headset allows you to receive audio without covering the ear, allowing users to have their ears open to all external sounds such as warning and fire alarms, machinery and outside traffic. You can also wear hearing protection and still use this Temple Transducer since you are hearing through bone vibrations on your temple.



**PMLN5101<sup>1</sup>**  
IMPRES Temple Transducer with boom microphone and in-line push-to-talk button

## HEAVY DUTY HEADSET

Designed for rugged use in noisy environments where hearing protection is required. This dual-muff headset includes flexible noise-canceling boom microphone with a push-to-talk switch located on the earcup. This can be worn with or without a helmet.



**PMLN5275<sup>1</sup>**  
Heavy Duty Headset, Noise Reduction = 24dB

## LIGHTWEIGHT HEADSET

Provides high-clarity, hands-free discreet two-way communication, while maintaining the comfort necessary for extended wear in moderate noise environments. This single-muff adjustable headset comes with rotating boom microphone for left or right positioning. Includes an in-line push-to-talk button.



**PMLN5058<sup>1</sup>**  
Lightweight Headset, over-the-head, single-muff with in-line push-to-talk



**PMLN5102<sup>1</sup>**  
Ultra-Lite Headset, Behind-the-Head Single-Muff, Adjustable with In-Line push-to-talk



**PMLN5096<sup>1</sup>**  
D-Style Earset with In-Line push-to-talk

## OPERATIONS CRITICAL WIRELESS

Ruggedly reliable and Bluetooth® compatible, our progressive portfolio ranges from lightweight, high-performing earpieces to a wireless push-to-talk (PTT) you can put in a pocket and link to any earpiece.



**PMLN5712**  
Operations Critical Wireless Adapter. Must be attached to the MOTOTRBO Accessory connector to operate a wireless accessory.



**NNTN8125**  
Operations Critical Wireless Earpiece with 12 inch cable. Includes micro USB charger.



**NNTN8126**  
Operations Critical Wireless Earpiece with 9.5 inch cable. Includes micro USB charger.



**89409N**  
HK200 Bluetooth Earpiece



**NNTN8127**  
Wireless Push-to-Talk Pod. This pod is compatible with any wireless Bluetooth headset and provides wireless Push-to-Talk functionality. Also comes with a micro USB charger.



**NTN2572**  
Replacement Wireless Earpiece, 12 inch cable

<sup>1</sup> Intrinsically Safe: Motorola approved accessories are a critical part of the specific radio and accessory system certified by a recognized testing organization as intrinsically safe. Non-Motorola approved accessories are not certified as part of the overall Motorola MOTOTRBO System. Use of non-Motorola approved accessories could result in equipment that is unapproved or unsafe in a hazardous environment.

# HEADSETS

## IMPRES EAR MICROPHONE

Lightweight earpiece that picks up sound through bone vibration. A built-in bone conduction microphone and receiver eliminate the need for a boom microphone. A programmable button is available for quick access to radio features.



**NTN2575**  
Replacement Wireless Earpiece, 9.5 Inch Cord



**PMLN5653**  
IMPRES Ear Microphone with large protected ring around push-to-talk

# CARRY ACCESSORIES

## CARRY CASES

Carrying cases are available in sizes designed to fit your radio and battery and permit audio to be heard clearly. Belt loop and nylon cases feature "D" rings that allow the cases to be attached to a carrying strap. Swivel model cases secure to a belt loop and allow the case to swing freely from side to side. The swivel latch system also allows the radio and case to be removed from the belt loop by simply inverting the case and lifting it up and out of the belt loop.

## MOTOTRBO WITH DISPLAY



**PMLN5015**  
Nylon Case with 3 Inch Fixed Belt Loop



**PMLN5021**  
Hard Leather Case with 3 Inch Fixed Belt Loop



**PMLN5019**  
Hard Leather Case with 2.5 Inch Swivel Belt Loop  
**PMLN5020**  
Hard Leather Case with 3 Inch Swivel Belt Loop

## NON-DISPLAY MOTOTRBO



**PMLN5024**  
Nylon case with 3 Inch fixed belt loop



**PMLN5030**  
Hard Leather Case with 3 Inch Fixed Belt Loop

## MOTOTRBO CSA CARRYING CASES



**PMLN5028**  
Hard Leather Case with 2.5 Inch Swivel Belt Loop  
**PMLN5029**  
Hard Leather Case with 3 Inch Swivel Belt Loop

**PMLN5606<sup>2</sup>**  
Hard Leather Case with 3 Inch Swivel Belt Loop for Display Models  
**PMLN5608<sup>2</sup>**  
Hard Leather Case with 3 Inch Swivel Belt Loop for Non-Display Models



**PMLN5607<sup>2</sup>**  
Soft Leather Case with 3 Inch Swivel Belt Loop for Display Models  
**PMLN5609<sup>2</sup>**  
Soft Leather Case with 3 Inch Swivel Belt Loop for Non-Display Models





# CARRY ACCESSORIES

## BELT LOOPS AND BELTS



**PMLN5022**  
2.5 Inch Leather Swivel Belt Loop



**PMLN5023**  
3 Inch Leather Swivel Belt Loop



**PMLN5610<sup>2</sup>**  
2.5 Inch Leather Swivel Belt Loop (CSA)



**4200865599**  
1.75 Inch Wide Leather Belt

## BELT CLIPS



**PMLN4651**  
Spring Action 2 Inch Belt Clip



**PMLN4652**  
Spring Action 2.5 Inch Belt Clip



**PMLN5134<sup>2</sup>**  
Spring Action 2.5 Inch Belt Clip (CSA)



Adjustable, Black Nylon Carrying Strap.  
Attaches to D-ring on cases.

## WATERPROOF BAG AND MORE



**HLN9985**  
Waterproof Bag with Large Strap



**RLN4295**  
Small Clip, Epaulet Strap

## CARRY PACKS

### UNIVERSAL CHEST PACK

Motorola Original Universal Chest Pack protects the radio and provides the freedom from holding it during standby communication mode. The Motorola Universal Chest Pack fits any radio.



**HLN6602**  
Universal Chest Pack with Radio Holder, Pen Holder and Velcro Secured Pouch

### BREAK-AWAY CHEST PACK

All the features of the original Universal Chest Pack (HLN6602) plus break-a-way tabs that allow the entire pack to be pulled off with approximately 10 lbs. of pressure.



**1505596Z02**  
Replacement Strap for HLN6602 and RLN4570



**RLN4570**  
Break-a-Way Chest Pack with Radio Holder, Pen Holder and Velcro Secured Pouch

<sup>1</sup> Intrinsically Safe: Motorola approved accessories are a critical part of the specific radio and accessory system certified by a recognized testing organization as intrinsically safe. Non-Motorola approved accessories are not certified as part of the overall Motorola MOTOTRBO System. Use of non-Motorola approved accessories could result in equipment that is unapproved or unsafe in a hazardous environment.

<sup>2</sup> Carry Cases PMLN5606, PMLN5608, PMLN5607 and PMLN5609 when used with a XPR 6580 I.S. radio model and properly equipped with the battery NNTN7789 is certified for permitted use for Ex ib IIC T4, Class II, Groups E, F, G and Class III, and DIP A21 TA 110° C. These carry cases are sold in Canada only.

# CARRY PACKS

## RADIOPAK™

The RadioPAK is lightweight and comfortable. Worn around the waist, it keeps radios and phones at hand. It features a separate 6 x 8 inch zippered pouch for other on-the-job necessities. Adjustable woven nylon belt fits both men and women.



**RLN4815**  
RadioPAK Radio Utility Case



**4280384F89**  
RadioPAK Extension Belt for waists larger than 40 inches

# BATTERIES

## IMPRES BATTERIES

You want to be sure to get the most out of every battery by maximizing its life. With IMPRES you can, because it automates battery reconditioning, adapting the intervals to each battery's usage pattern.



**PMNN4066**  
IMPRES Li-Ion 1500 mAh, Submersible Battery - IP57 Rating



**PMNN4069<sup>1</sup>**  
IMPRES Li-Ion 1400 mAh, Submersible Battery - IP57 Rating, Intrinsically Safe (FM)



**PMNN4077**  
IMPRES Li-Ion 2150 mAh, Submersible Battery - IP57 Rating



**NNTN7789<sup>2</sup>**  
IMPRES Li-Ion 1750 mAh Submersible Battery - IP57 Rating, Intrinsically Safe (CSA)

## MOTOROLA ORIGINAL BATTERY

This battery is ruggedly designed for lasting durability and is system tested with Motorola two-way radios to ensure optimum performance. NiMH chemistry offers an attractive combination of capacity, weight and cost.



**PMNN4065**  
NiMH 1300 mAh, Submersible Battery - IP57 Rating

# CHARGERS

## IMPRES CHARGERS

This smart energy system automatically reconditions IMPRES batteries based on actual usage, keeping them in peak condition. Talk-time and cycle life are optimized and the need for manual maintenance programs is eliminated. Its advanced conditioning features allow batteries to be safely left on the charger for extended periods of time without incurring damaging heat build-up which can decrease battery cycle life. In addition, batteries left in the charger are kept fully charged so they are always ready when needed. This rapid-rate, tri-chemistry charging system will also charge compatible non-IMPRES batteries.



**WPLN4232**  
IMPRES Single-Unit Charger, 120 Volt



**WPLN4212**  
IMPRES Multi-Unit Charger, 120 Volt

## IMPRES MULTI-UNIT CHARGER WITH DISPLAY

Charger Displays provide powerful, "real time" information for IMPRES batteries, including current charge status, battery mAh, and voltage. Readout displays battery kit number, serial number and chemistry. 120 Volt.



**WPLN4219**  
IMPRES Multi-Unit Charger with Displays



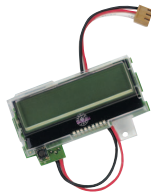
**NLN7967**  
Wall Mount for Multi-Unit Chargers

<sup>1</sup> Intrinsically Safe: Motorola approved accessories are a critical part of the specific radio and accessory system certified by a recognized testing organization as intrinsically safe. Non-Motorola approved accessories are not certified as part of the overall Motorola MOTOTRBO System. Use of non-Motorola approved accessories could result in equipment that is unapproved or unsafe in a hazardous environment.  
<sup>2</sup> XPR 6580 I.S. radio models, when properly equipped with the battery NNTN7789 are certified for permitted use for Ex ib IIC T4, Class II, Groups E, F, G, and Class III, and DIP A21 TA 110° C. This battery is sold in Canada only.

# CHARGERS

## IMPRES INDIVIDUAL CHARGER DISPLAY MODULE

This module is compatible with the standard IMPRES Multi-Unit Chargers. Up to 6 modules can be used per charger, one for each charging pocket. Includes detailed installation instructions.



**RLN5382**  
Display Module for IMPRES Multi-Unit Charger (WPLN4212)

## IMPRES COMPATIBLE VEHICULAR CHARGER

This charger has a full IMPRES charger to battery communication capability. This ensures continuity of IMPRES battery charge data logging in a vehicular environment, so the IMPRES battery will receive adaptive automatic reconditioning and will qualify for the 6-month capacity warranty extension.



**NNTN7616**  
IMPRES Compatible Vehicular Charger

## MOTOROLA TRAVEL CHARGER

Its small compact design allows the radio to be used while rapid charging in the charger base. Unit includes a voltage regulated vehicular charger adapter, custom charger base, mounting bracket and coil cord.



**RLN6433**  
Motorola Travel Charger

## IMPRES BATTERY FLEET MANAGEMENT SOFTWARE

The industry exclusive IMPRES Battery Fleet Management software remotely downloads key IMPRES battery data through existing IMPRES chargers for more effective management of the IMPRES battery and charger fleet. These reports provide key battery and charger data such as when IMPRES batteries are nearing end of life, identifying lost batteries and ensuring IMPRES chargers are appropriately distributed and use is maximized.



**NNTN7676**  
IMPRES Battery Fleet Management Software

### **NNTN7677**

Multi-Unit Charger Interface Unit, attaches to an APX, XTS, MOTOTRBO and Professional Series IMPRES multi-unit charger to enable the data transfer to IMPRES Battery Fleet Management. A CIU is required for IMPRES chargers that report data to IMPRES Battery Fleet Management.



### **NNTN8045**

Single-Unit Charger Interface Unit, attaches to an APX, MOTOTRBO and Professional Series IMPRES single-unit charger to enable the data transfer to IMPRES Battery Fleet Management. A CIU is required for IMPRES chargers that report data to the IMPRES Battery Fleet Management.



## IMPRES BATTERY READER

The industry exclusive IMPRES Battery Reader provides IMPRES battery users the ability to access charging, reconditioning and key usage data that can affect overall battery performance. By keeping batteries in peak condition, talk time and cycle life are optimized, reducing battery replacement. Package includes IMPRES Battery Reader (fits XTS batteries), System Software, USB Cord, Adapter inserts for APX, MOTOTRBO and Professional Series radios.



**NNTN7392**  
IMPRES Battery Reader

# PORTABLE ANTENNAS

## COMBINATION GPS/ UHF ANTENNAS

Optimum length antenna designed for higher gain to maximize range. This rugged, capless design provides maximum flexibility and built in capability to operate at GPS frequencies.

- PMAE4018<sup>1</sup>**  
Combination GPS/UHF - 403-433 MHz, 14 cm Folded Monopole
- PMAE4024<sup>1</sup>**  
Combination GPS/UHF - 430-470 MHz, 14 cm Folded Monopole

- PMAE4050<sup>1</sup>**  
Combination GPS/UHF - 450-495 MHz, 14 cm Folded Monopole
- PMAE4051<sup>1</sup>**  
Combination GPS/UHF - 495-527 MHz, 14 cm Folded Monopole



## COMBINATION GPS/ VHF ANTENNAS

- PMAD4067<sup>1</sup>**  
Combination GPS/VHF - 136-147 MHz, 17 cm Helical
- PMAD4068<sup>1</sup>**  
Combination GPS/VHF - 147-160 MHz, 17 cm Helical

- PMAD4069<sup>1</sup>**  
Combination GPS/VHF - 160-174 MHz, 17 cm Helical

## COMBINATION GPS 800/900 MHZ ANTENNA

- PMAF4003<sup>1</sup>**  
Combination GPS 800/900 MHz - 806-941 MHz, 18 cm, Helical



## FLEXIBLE WHIP ANTENNAS

Flexible Whip Antennas have a one-piece finish, steel core, and spiral wound conductor for optimal radiation characteristics.

- PMAE4022<sup>1</sup>**  
UHF - 403-470 MHz, 16 cm Flexible Whip
- PMAE4049<sup>1</sup>**  
UHF - 450-527 MHz, 16 cm Flexible Whip

- PMAD4088<sup>1</sup>**  
VHF - 136-174 MHz, 21 cm Wideband



## STUBBY ANTENNAS

Stubby antennas are ideal when the radio is worn on the belt because they are short and non-obtrusive. These rugged, helical antennas feature a capless sheath that allows for maximum flexibility.

- PMAE4021<sup>1</sup>**  
Combination GPS/UHF - 403-433 MHz, 9 cm Stubby
- PMAE4023<sup>1</sup>**  
Combination GPS/UHF - 430-470 MHz, 9 cm Stubby
- PMAE4048<sup>1,2</sup>**  
Combination GPS/UHF - 450-527 MHz, 9 cm Stubby

- PMAD4093<sup>1</sup>**  
VHF - 136-147 MHz, 11 cm Stubby
- PMAD4094<sup>1</sup>**  
VHF - 147-160 MHz, 11 cm Stubby
- PMAD4095<sup>1</sup>**  
VHF - 160-174 MHz, 11 cm Stubby



## PUBLIC SAFETY MICROPHONE ANTENNAS

One of the following antennas must be purchased with Public Safety Microphones.

- PMAE4046<sup>1</sup>**  
UHF - 403-433 MHz, 9 cm PSM Stubby
- PMAE4047<sup>1</sup>**  
UHF - 430-470 MHz, 9 cm PSM Stubby

- PMAD4086<sup>1</sup>**  
VHF - 150-174 MHz, 16 cm PSM
- PMAD4087<sup>1</sup>**  
VHF - 136-153 MHz, 16 cm PSM



<sup>1</sup> Intrinsically Safe: Motorola approved accessories are a critical part of the specific radio and accessory system certified by a recognized testing organization as intrinsically safe. Non-Motorola approved accessories are not certified as part of the overall Motorola MOTOTRBO System. Use of non-Motorola approved accessories could result in equipment that is unapproved or unsafe in a hazardous environment.

<sup>2</sup> Also a Public Safety Microphone antenna.

# MOBILE AUDIO

## STANDARD COMPACT MICROPHONE

Standard Compact Microphone provides basic push-to-talk functionality and ships with all MOTOTRBO mobile radios.



**RMN5052**  
Standard Compact Microphone

## IMPRES KEYPAD MICROPHONE

IMPRES Keypad Microphone includes a full keypad that enables you to dial phone numbers from the microphone, also has three customizable buttons that can be programmed with any of the control head features, allowing the user to navigate radio menus from the microphone.



**RMN5065**  
IMPRES Keypad Microphone

## IMPRES HEAVY-DUTY MICROPHONE

Heavy-Duty Microphone for users who want more durability, also ideal for those who need a larger microphone that is easier to handle when wearing gloves.



**RMN5053**  
IMPRES Heavy-Duty Microphone

## IMPRES TELEPHONE STYLE HANDSET

This Telephone Style handset provides a flexible, discreet option when using the mobile for private conversations in a vehicular environment. Includes a full keypad that enables you to dial phone numbers or send text messages.



**HMN4098**  
IMPRES Telephone Style Handset

### MOBILE MICROPHONE ACCESSORIES

## MICROPHONE EXTENSION CABLES



10-foot Mobile Microphone Extension Cable  
20-foot Mobile Microphone Extension Cable

## MICROPHONE HANG-UP CLIPS



**HLN9073**  
Microphone Hang-Up Clip



**HLN9414**  
Universal Microphone Hang-Up Clip

### HANDS-FREE ACCESSORIES

## IMPRES VISOR MICROPHONE

Add even more convenience and safety with the IMPRES Visor Microphone and its compatible hands-free transmission options. Small microphone mounts to vehicle's visor for convenient hands-free radio operation. Use with choice of external push-to-talk switch.



**RMN5054**  
IMPRES Visor Microphone

## EXTERNAL PTT ACCESSORIES

### RLN5926

Pushbutton with Push-to-Talk. Can be held in the hand, or mounted to the vehicle with touch fasteners.



### RLN5929

Emergency Footswitch



# CONTROL STATION AND MOUNTING

## CONTROL STATION ACCESSORIES

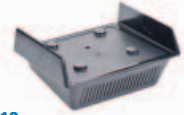
These control station accessories allow you to convert MOTOTRBO mobile two-way radios into convenient base stations.

**RMN5050**  
Desktop Microphone. Black. Makes transmission easier for base station users, as the mobile microphone does not always have to be picked up. Large push-to-talk button.



## POWER ACCESSORIES

**GLN7318**  
Desktop Tray without Speaker. Ideal for securing mobile in place in a desktop environment.



**RSN4005**  
Desktop Tray with Speaker. Ideal for securing mobile in place in a desktop environment. Includes speaker for increased volume when receiving calls in high-noise areas.



**HKN9088**  
Adapter Cable for Control Station



**HPN4007**  
Power Supply, 25-60W, for low power radios. Power cord included.



**GPN6145**  
Switchmode Power Supply, 1-25W has provision for back-up battery hook-up.



**GKN6266**  
Power Supply Cable  
Power Cable for Switchmode Power Supply GPN6145

## EXTERNAL LOUD SPEAKERS



**RSN4002**  
13W External Speaker  
**RSN4003**  
7.5W External Speaker



**RSN4004**  
5W External Speaker

## MOUNTING BRACKETS

Mobile radios are most often installed on the dash of a vehicle, and can run off its power source.



**RLN6077**  
Low Profile Trunnion Kit. Keeps radio tucked up under dash, can also be positioned for floor mount.



**RLN6078**  
High Profile Trunnion Kit. Under dash mount, with extra clearance so radio can be tilted for a better view. Can also be used for floor mounting.



**RLN6079**  
Key Lock Trunnion Kit. Key lock helps provide extra protection from theft. Lock/unlock radio from position in the mounting bracket.

## DIRECT IN DASHBOARD MOUNTING KIT

Ideal if you prefer to mount the radio directly into the dash-board for a better appearance, or to keep it from being an obstruction in the vehicle.



**RLN5933**  
In Dash Mounting Kit - DIN

## REMOTE MOUNTING ACCESSORIES

Remote mounting capabilities allow you to save cabin space or hide the mobile power supply in the trunk.



**PMLN5404**  
MOTOTRBO Mobile Remote Mount Adaptor Kit. For in-trunk installation, may also require HKN4192. 20 inch radio power cable. Remote Mount cable also required (PMKN4074 or PMKN4073).

# CONTROL STATION AND MOUNTING

## PMKN4073

MOTOTRBO Mobile Remote Mount 5  
Meter Cable Kit



## PMKN4074

MOTOTRBO Mobile Remote Mount 3  
Meter Cable Kit



## PMKN4018

Mobile Rear Accessory Connector Universal  
Cable

## CABLES TO BATTERY

Cables used to connect the battery to  
the radio chassis.



## HKN4137

Power Cable to Battery 10 foot, 15 amp

## HKN4192

Power Cable to Battery 20 foot, 20 amp



## RKN4136

Ignition Sense Cable



# MOBILE ANTENNAS

## WIDE AREA THROUGH-HOLE MOUNT ANTENNAS

These through-hole mount antennas are designed to direct the signal more towards the horizon, making them ideal for applications in more geographically flat regions where signal coverage is sparse and must cover a larger area.

UHF

- HAE4010**  
406-420 MHz, 3.5dB Gain
- HAE4011**  
450-470 MHz, 3.5dB Gain
- HAE4012**  
470-494 MHz, 3.5dB Gain
- HAE4013**  
494-512 MHz, 3.5dB Gain



- RAE4004**  
445-470 MHz, 5dB Gain

800/900 MHZ

- RAE4163ARB**  
410-430 MHz, Stubby
- RAE4164ARB**  
430-450 MHz, Stubby
- RAE4168ARB**  
450-470 MHz, Stubby
- RAE4166ARB**  
470-490 MHz, Stubby



- HAF4026**  
806-941 MHz, 3dB Gain



- HAF4013**  
806-941 MHz, Stubby



- HAF4027**  
806-941 MHz, 5dB Gain



## URBAN THROUGH-HOLE MOUNT ANTENNAS

The signals for these through-hole mount antennas radiate vertically, making them ideal for urban environments where buildings can obstruct the signal.

UHF

- HAE4002**  
403-430 MHz, 1/4 Wave
- HAE4003**  
450-470 MHz, 1/4 Wave
- HAE4004**  
470-527 MHz, 1/4 Wave



VHF

- HAD4006**  
136-144 MHz, 1/4 Wave
- HAD4007**  
146-150.8 MHz, 1/4 Wave
- HAD4008**  
150.8-162 MHz, 1/4 Wave
- HAD4009**  
162-174 MHz, 1/4 Wave



800/900 MHZ

- HAF4025**  
806-941 MHz, 1/4 Wave



## GPS ACTIVE ANTENNAS

The following antennas are intended for users who have existing mobile antennas and need to add GPS capability.



- PMAN4000**  
Fixed Mount GPS Active Antenna. Discreet stand-alone GPS antenna has a semi-permanent mount easily assembled with minimal tools to vehicle roof or trunk.



- PMAN4001**  
Glass Mount GPS Active Antenna



- PMAN4002**  
Magnetic Mount GPS Active Antenna. Discreet stand-alone GPS antenna can be mounted either magnetically, via screw or tape to vehicle roof or trunk.



# MOBILE ANTENNAS

## COMBINATION GPS ANTENNAS

The following through-hole mount antennas combine UHF or VHF and GPS capability. This combination antenna design with Mini U connector provides GPS tracking coverage and voice/data wireless capabilities for fleet monitoring or tracking applications.



### COMBINATION GPS/UHF

- PMAE4030**  
GPS/UHF - 403-430 MHz, 1/4 Wave
- PMAE4032**  
GPS/UHF - 406-420 MHz, 3.5dB Gain
- PMAE4031**  
GPS/UHF - 450-470 MHz, 1/4 Wave
- PMAE4033<sup>1</sup>**  
GPS/UHF - 450-470 MHz, 3.5dB Gain
- PMAE4034**  
GPS/UHF - 450-470 MHz, 5dB Gain

### COMBINATION GPS/VHF

- HAE6019**  
GPS/UHF - 403-527 MHz, 2dB Gain
- HAE6020**  
GPS/UHF - 470-527 MHz, 1/4 Wave
- HAE6024**  
GPS/UHF - 470-494 MHz, 3.5dB Gain
- HAE6026**  
GPS/UHF - 494-512 MHz, 3.5dB Gain

- RAD4214**  
GPS/VHF - 136-144 MHz, 1/4 Wave
- RAD4215**  
GPS/VHF - 146-150.8 MHz, 1/4 Wave
- RAD4216**  
GPS/VHF - 150.8-162 MHz, 1/4 Wave
- RAD4217**  
GPS/VHF - 162-174 MHz, 1/4 Wave
- RAD4218**  
GPS/VHF - 146-172 MHz, 3dB Gain

### COMBINATION GPS/800/900 MHZ

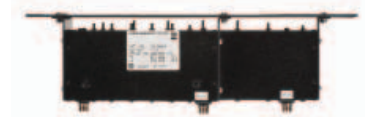
- HAF4029**  
GPS/800/900 MHz - 806-941 MHz, 1/4 Wave
- HAF4030**  
GPS/800/900 MHz - 806-941 MHz, 3dB Gain
- HAF4032**  
GPS/800/900 MHz - 806-941 MHz, Stubby
- HAF4033**  
GPS/800/900 MHz - 806-941 MHz, 5dB Gain

# REPEATER ACCESSORIES

## DUPLEXERS

- HFD8188**  
VHF - Untuned Duplexer, 144-155 MHz
- HFD8189**  
VHF - Untuned Duplexer, 155-162 MHz
- HFD8190**  
VHF - Untuned Duplexer, 162-174 MHz
- HFD8465**  
VHF - Tuned Duplexer, 150-160 MHz
- HFE8400**  
UHF - Untuned Duplexer, 406-450 MHz
- RFE4000**  
UHF - Untuned Duplexer, 450-470 MHz
- TDE7780**  
UHF - Tuned Duplexer, 450-470 MHz
- HFE8401**  
UHF - Untuned Duplexer 470-490 MHz

- HFE8454**  
UHF - Untuned Duplexer 490-512 MHz
- DSTRB0650WDUPLXR**  
800/900 MHz Untuned Duplexer 806-941 MHz



## DUPLEXER ACCESSORIES

- 0112004B04**  
N Type Male to N Type Male Duplexer Cable - 24 Inch
- 0112004U04**  
N Type Male to BNC Male Duplexer Cable - 24 Inch
- 3082081X01**  
Right angle N-type male to straight n-type male 30" cable to connect 100W power amplifier to external duplexer or preselector



- PMLE4548**  
Rack-Mount Duplexer/Filter Enclosure Kit

## UNTUNED DUPLEXERS

For use with 100 Watt power amplifiers.

- 0185417U01**  
VHF Duplexer, 132-146 MHz (5 MHz separation RX or TX) - 110W
- 0185417U02**  
VHF Duplexer, 144-160 MHz (5 MHz separation RX or TX) - 110W
- 0185417U03**  
VHF Duplexer, 158-174 MHz (5 MHz separation RX or TX) - 110W

- 0185417U04**  
UHF Duplexer, 403-440 MHz (5 MHz separation RX or TX) - 110W
- 0185417U05**  
UHF Duplexer, 435-470 MHz (5 MHz separation RX or TX) - 110W
- 0185417U06**  
UHF Duplexer, 470-490 MHz (5 MHz separation RX or TX) - 110W
- 0185417U07**  
UHF Duplexer, 490-512 MHz (5 MHz separation RX or TX) - 110W

<sup>1</sup> Antenna not ideal for roof-mounted use.

# REPEATER ACCESSORIES

## ANTENNAS

### RDE4556

UHF - 3.8dB Gain Antenna

### RDD4527

VHF - 136-144 MHz 1/4 Wave Antenna

### RDE4555

UHF - 3.8dB Gain Antenna, 470-488 MHz

### RDE4557

UHF - 3.8dB Gain Antenna, 403-420 MHz

### DSTRB0800ANTSC420

800 MHz - 7.5dB Gain Antenna,  
806-869 MHz

### DSTRB0900ANTSC420

900 MHz - 7.5dB Gain Antenna,  
896-941 MHz

## CIRCULATOR

### HFF4003

810-960 MHz Circulator, 18 dB min  
insulation, 100W max power handling



## PRESELECTOR

### HFE8459

UHF Preselector, 440-474 MHz

### HFD8461

VHF Preselector, 144-160 MHz

### HFD8462

VHF Preselector, 160-174 MHz

### HFE8460

UHF Preselector, 474-527 MHz



### DSTRB0350WPRESEL

800/900 MHz Preselector, 806-960 MHz

## 100 WATT POWER AMPLIFIERS

### DSP1020MOVCS

P10 Series Amplifier, 136-174 MHz,  
20-50W Input, 100W Output

### DSP1020MOUC5

P10 Series Amplifier, 406-512 MHz,  
20-50W Input, 100W Output

### DSP1515MOJKC6

P15 Series Amplifier, 764-870 MHz,  
15-25W Input, 150W Output

### DSP1520MOJKC6

P15 Series Amplifier, 764-870 MHz,  
20-50W Input, 150W Output

### DSP1515MOLC6

P15 Series Amplifier, 928-942 MHz,  
15-25W Input, 150W Output

### DSP1520MOLC6

P15 Series Amplifier, 928-942 MHz,  
20-50W Input, 150W Output

### R1684 RM60M

Astron Power Supply, 50A Continuous,  
55A ICS

### R1685 RM50M

Astron Power Supply, 37A Continuous,  
50A ICS

### RDN9900

DPS-30 Duracomm, Filtered Power Supply,  
30A Max



The following 100W Amplifiers include an  
integrated 110W Power Supply

### DSP1020MOVPS

P10 Series, C5 Amplifier, 136-174 MHz,  
20-50W Input, 100W Output

### DSP1020MOUNS

P10 Series, C5 Amplifier, 406-512 MHz,  
20-50W Input, 100W Output

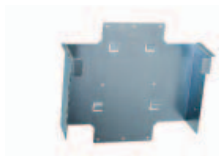
### DSP1020MOJKPS

P10 Series, C5 Amplifier, 764-870 MHz,  
20-50W Input, 80W Output

### DSP1020MOLPS

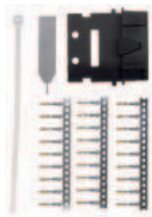
P10 Series, C5 Amplifier, 928-942 MHz,  
20-50W Input, 75W Output

## MOUNTING



### PMLE4476

Wall Mount Kit for XPR 8300



### PMLN5072

Hardware Kit for Rear Accessory Connector



### HKN9088

Mobile Mini U Antenna Adapter with  
8 Foot Cable

# REPEATER ACCESSORIES

## LIGHTNING PROTECTION ACCESSORIES

- RRX4025**  
Lightning Arrestor
- RRX4032**  
Tower Mounting Hardware
- RRX4038**  
Surge Suppressor



## MISCELLANEOUS



- RKN4152**  
Battery Back-up Cable



- 3087791G01**  
120V AC Line Cord



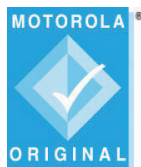
- PMKN4010**  
Mobile and Repeater Rear Accessory Programming Cable
- PMKN4016**  
Mobile and Repeater Rear Programming, Test and Alignment Cable





## Magnum Electronics, Inc

927 Horsepond Road  
Dover, DE 19901  
302-734-9250  
302-734-1056  
main@magnumelectronics.com  
[www.magnumelectronics.com](http://www.magnumelectronics.com)



For more information on how to make your business more efficient and better connected, visit [www.motorola.com/motrbo](http://www.motorola.com/motrbo)

Motorola Solutions, Inc. 1301 E. Algonquin Road, Schaumburg, Illinois 60196 U.S.A. [motorolasolutions.com](http://motorolasolutions.com)

MOTOROLA, MOTO, MOTOROLA SOLUTIONS and the Stylized M Logo are trademarks or registered trademarks of Motorola Trademark Holdings, LLC and are used under license. All other trademarks are the property of their respective owners.  
© 2011 Motorola Solutions, Inc. All rights reserved.

RC-3-1001B

